



M E R I D I A N

147 S. Cherry Street, Suite 200 | Winston-Salem, NC 27101 | p 336.722.1986 | f 336.723.3173 | Meridianrealty.com

302-8,872± SF Office | Lab

# Victoria Hall

111 N. Chestnut Street, Winston-Salem, NC 27101



Victoria Hall is a modern three story office building located on the South Western corner of the Innovation Quarter. It is directly beside the new court house and is convenient to a number of other local governmental buildings. Structured parking and street parking are available, and the building is easily accessible via an elevator. There are a variety of suite sizes with open and built out office layouts.

For more information:

**Jesse H. Jarrell, CCIM**

Jjarrell@meridianrealty.com

336.480.2324

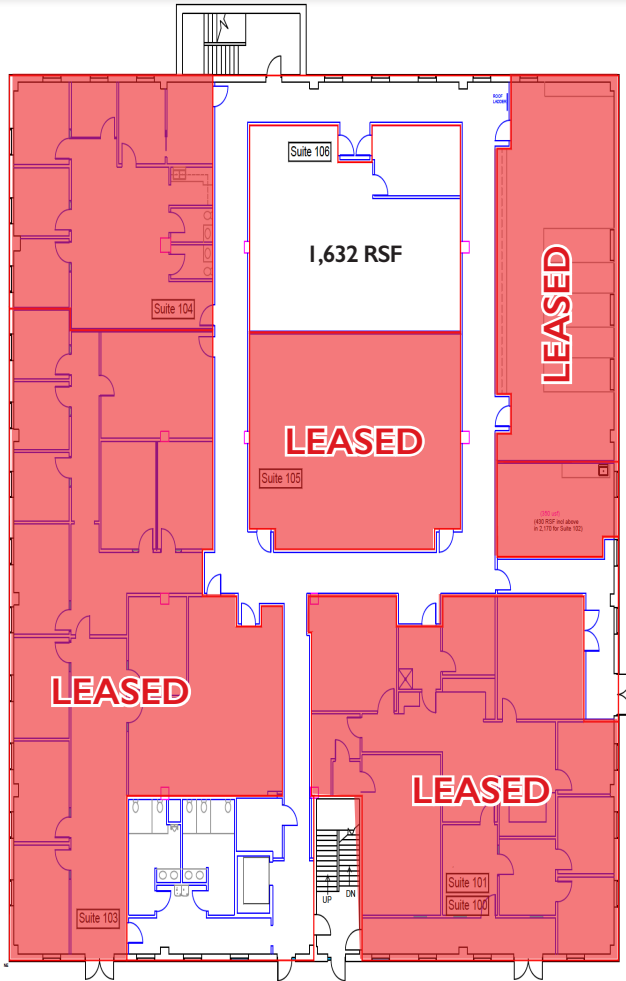
**FOR LEASE: Negotiable**

WWW.MERIDIANREALTY.COM

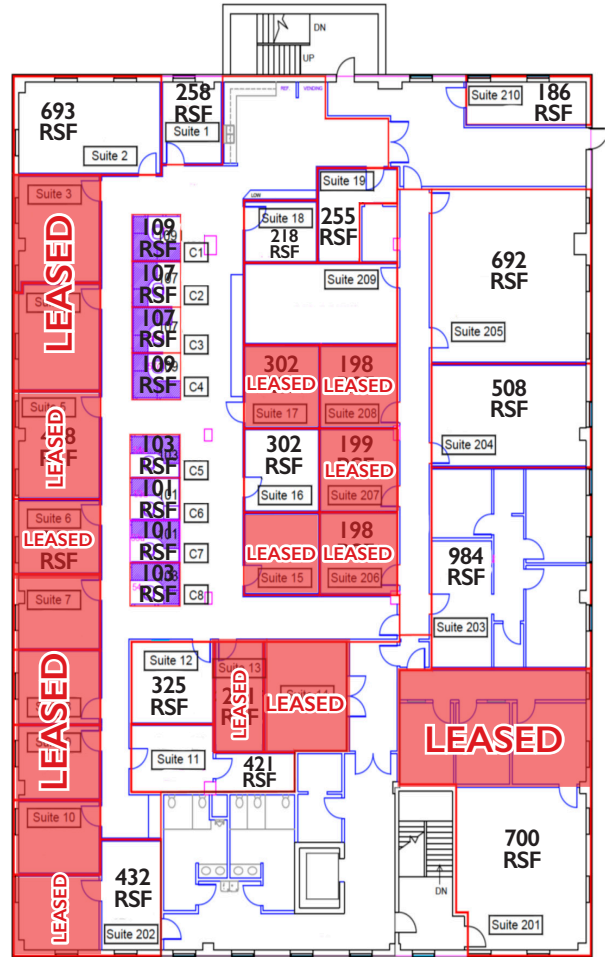
IMAGES



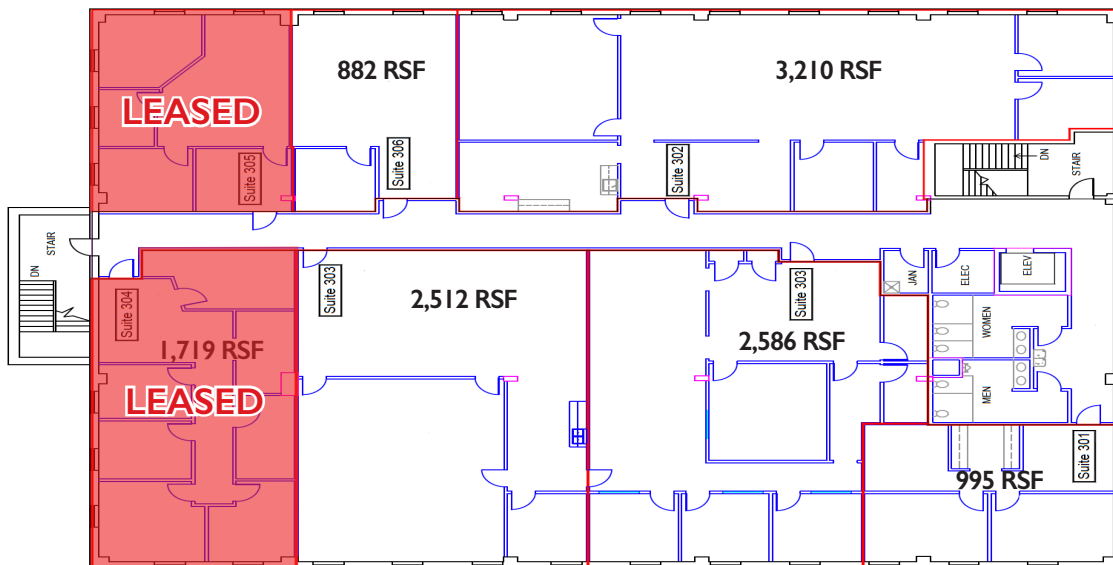
FLOOR 1



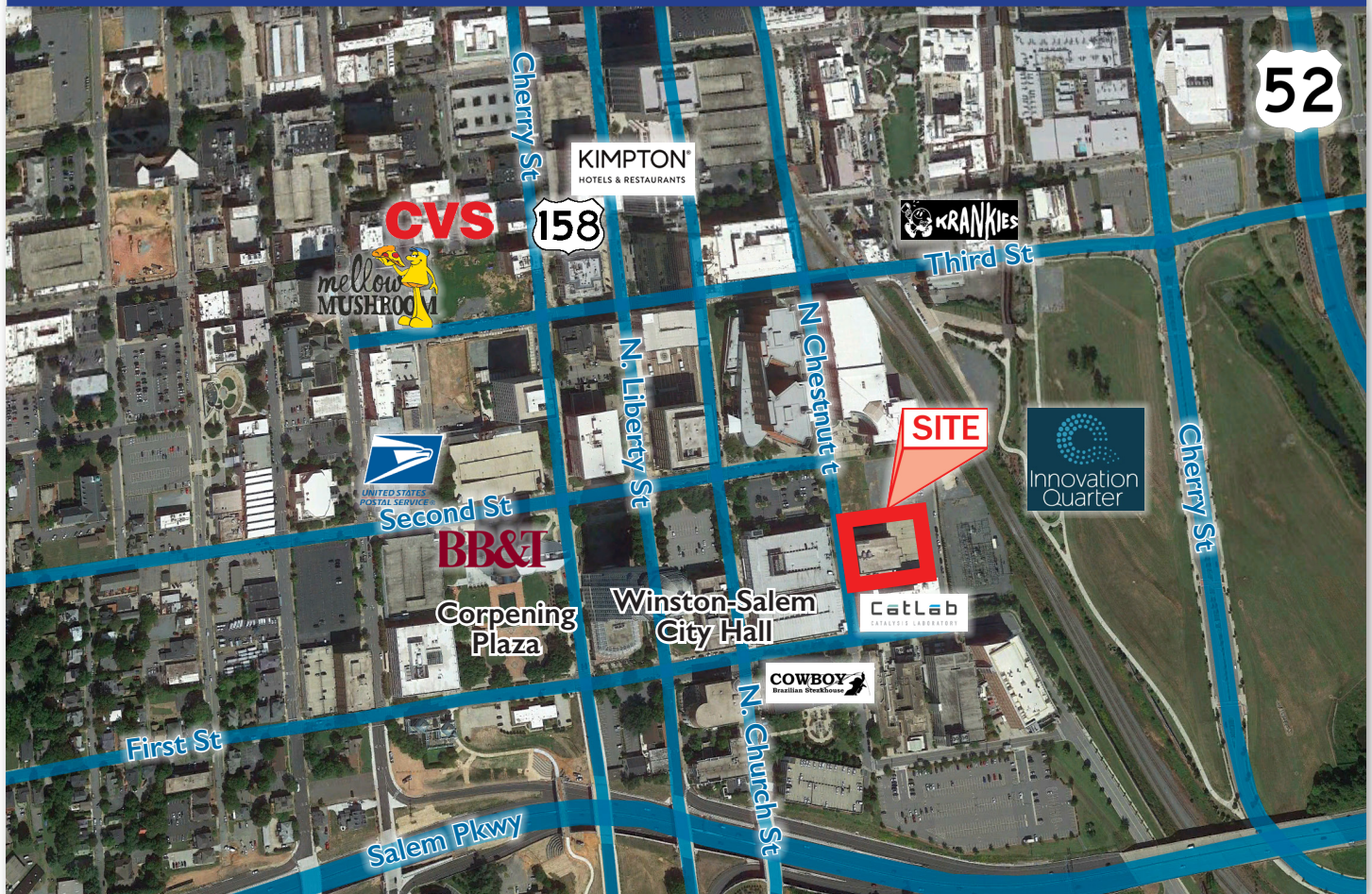
FLOOR 2



FLOOR 3



AERIAL



- Convenient Innovation Quarter Location
- Modern and clean office
- Variety of office sizes and layouts
- Structured parking
- For Lease: Negotiable



No warranty or representation (express or implied) is made as to the accuracy or completeness of the information set forth herein. All information is submitted subject to errors, omissions, change of price, prior lease or sale, and withdrawal without notice. All marketing material produced by the Meridian Realty Group is proprietary. Any reproduction is expressly prohibited.



THE MERIDIAN REALTY GROUP | 147 S. CHERRY STREET, SUITE 200 | WINSTON-SALEM, NC 27101  
 P 336.722.1986 | F 336.723.3173